



# THE DISTRIBUTOR

CALIFORNIA EDITION  
 APRIL - 1990  
 VOLUME XXX / ISSUE 4

EDITORS: MARTHA & LES WHITE  
 PUBLISHERS: BOB & KARYN SITTER

## GENERAL MEETING

Will be held on:  
**Thursday, April 12, 1990.**  
**AT: 7:30 P.M.**

Due to the school's Easter holiday the April meeting will be held at the Me 'n Ed's Pizza Parlor in Garden Grove.

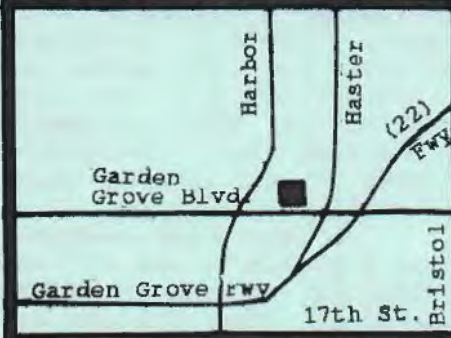
Me 'n Ed's has offered all members \$2.00 off any large pizza, just tell them you are with our club. So come early to have pizza, or stay later after the meeting.

### Feature Event:

Following the General Meeting business, videos of our Pancake Breakfast will be shown, FUN, a must see!!

### Location:

12731 Garden Grove Blvd.  
 Garden Grove, CA.



### INDEX

President.....	Page 2-3
Calendar/Events.....	Page 6
Editor.....	Page 2
Special Events.....	Page 2
Activities.....	Page 3-4
Tours / Events Photo Page.....	Page 4-5
General Meeting.....	Page 1
Technical Advisor.....	Page 2
Secretary.....	Page 3
Map Board Meeting.....	Page 4
Classified.....	Page 7
Fashion.....	Page 8
New Members.....	Page 1
Convention Registration.....	Page 9-10
Stanchion Project.....	Page 11

## LADIES IMPORTANT MESSAGE

By Bev Marsh

Calling ALL Orange County's Model A Ladies

As some of you know our club has offered for our lady members to help with the National Convention registrations.

Right now training classes are being held to become acquainted with the easy to learn computer. Informal training, all you need to have is a minimum skill in typing. Help is also needed get all the pre-registration information into the computers, NOW, prior to Convention.

Please call Martha Trousil (in Downey), (213) 861-7469. She's willing to hold training classes Wed, Thurs or Sat.

Lois Smith needs help NOW, prior to Convention stuffing envelopes, call her.

Also, Lois Smith will soon be signing up women for 2 hour shifts to help people get all their registration materials at the time they're checking in at the Convention. Call her NOW, so they can divide the work load and so they will know who will be helping. She lives in Lakewood and her Phone number is (213) 425-5231.

I might be able to answer some further questions if you want to call me, Bev Marsh (714) 531-7237.

## SPECIAL THANK YOU

A Special Thank You to Glenn Johnson for the Pancake Breakfast Banner. It looked great hanging over the Orange Circle. Thank you Glenn for making this a reality.

## "NEED GOODIE BAGS"

We need articles to put in "goodie bags" for the Fun Meet, May 6th.

Ask your bank business friends, ect., if they would be able to donate small articles such as pins, magnets, hats, badges, ect., anything and everything.

We are hosting this meet. Please do your best in this small way to help our club.

We need 25 to 150 of each article.

We also need help on the day of the event registering cars, any and all help will be appreciated!

Bring your "free-bees" to the April meeting (or get them to Bev Marsh no later than April 29th.)

## WELCOME NEW MEMBERS

Bob and Gerri Ash  
 13102 Palomar Way  
 Santa Ana, CA 92705  
 (714) 541-2981

H.R. "Van" and Colleen VanGundy  
 819 S. Roanne St.  
 Anaheim, CA 92804  
 (714) 527-5769



## LETTER FROM THE EDITOR

By Martha White  
Editor

I want to thank everyone who sent in the great photos of the Pancake Breakfast. I hope everyone enjoys them.

Unfortunately, I'm not able to print all of them, but I'll try to remember to bring them to the April Meeting. If you have any photos that you would like to share, of the Breakfast or of any future event either mail them to us at: Les and Martha White  
121 W. Knepp  
Fullerton, CA. 92632,  
or bring them to the meeting. I'll do my best to get them into the Distributor.

We are also looking for interesting items or articles. If you would like to try your hand at one, PLEASE send it to us!!

I want to thank Piet Dwinger for his article and drawing on stanchions that he submitted to us. I know all the newer members will be very happy to see these well written directions.

Again, thanks Piet!!

### BOARD OF DIRECTORS

President - Jim Marsh  
(714) 531-7237

Secretary - Terry Lucas  
(714) 633-0390

Treasurer - Wade Roberts  
(714) 675-5457  
(714) 673-2261

Activities -  
Joe Wavra (714) 549-2881  
Paul Steed (714) 441-0641  
(714) 998-0394

Technical Advisor - Don Tune  
(714) 832-8239

Special Events  
Joe Wavra (714) 549-2881  
Paul Steed (714) 998-0394

Editor - Martha and Les White  
(714) 870-6417  
(714) 772-2284

Publishers - Bob and Karyn Sitter  
(714) 777-2486

MATCA National Membership is required for membership to the Orange County Chapter.

## ISN'T THAT SPECIAL

The Buena Park Mall Show is scheduled for June 15, 16, 17, 1990. A

**MINIMUM** of THIRTY CARS are still needed. Joe needs your support to fulfill this contract so give him a call if you can help out with this show. These cars are needed running or not, restored or not, just a frame, bring it!!!!

The club trailer is available if you need it. Contact Don Tune for use.

Don't forget to call Joe, (714) 549-2881, he needs to know who will be there with their cars and how many you are bringing!!!

## TECHNICALLY SPEAKING



By Don Tune  
Technical Advisor

We had a real good turnout at the wood graining seminar. Thanks Terry and Joan Lucas for your hospitality. Thanks Terry for all the preparation that went into the seminar. Terry made wood graining look easy.

The April seminar will be on transmissions. Jon Heiland will demonstrate the disassembly, inspection and reassembly of a transmission. Bob and Patty Ferazzi will host the seminar. See you there at 7:30 Friday evening. I welcome suggestions for future seminars.

The following is a list of tools and equipment belonging to the club and available for all members to use:

Car trailer  
Spring spreader  
Frame spreader  
Serial number stamps  
Distributor reamer and holding block  
Engine hoist  
Wheel painting stand  
Tow bar  
Tool kits

Call me at (714) 832-8239 and I will put you in touch with the member currently in possession of what you need.

## MOOSE'S MESSAGE

By Jim Marsh  
President

Well, the 1990 Pancake Breakfast is in the history book as another "best of the best". My thanks go to Paul, Joe, and everyone of you that helped make this breakfast such a success. It was nice to see so many model A's and Model A'sers having a good time. It was good to see once again, some of our old members, Boef, Eathertons, Lacys, (except Bud was busy golfing), Vaughns, glad you guys came out to help make our breakfast such a success and most of all many thanks to the SOUTHERN CALIFORNIA CLUBS. I won't name them because I may forget one and I surely wouldn't want to leave anyone out. THANKS MUCH FOR ATTENDING!

I would like to take this opportunity to, again, solicit any of your comments or questions about the club, or comments on how we may improve it. I am very pleased with the way things are going myself, but, if someone has a better idea please let me know. Our tours are great, our activities super, our treasury is healthy, technical seminars are good, meeting programs, (except for last month) are interesting and the news letter has been extremely well-received. Everything seems to be running quite smoothly.

I hope that everyone got a chance to see our new "Welcome to the OCMAFCA" brochure, Piet Dwinger did a fantastic job of putting it together and Bob and Karyn Sitter the same for their publishing. 'Tis a job well done! This brochure should be used by ourselves to solicit new club members. I had 3 guys ask me about joining our club at the Pancake Breakfast and we will mail



## MOOSE'S MESSAGE (CONTINUED)

them copies of this brochure.

See you all at the next meeting. Hope you'll join us at "Me 'n Ed's" Pizza Parlor afterwards.



## BOARD MEETING

By Terry Lucas  
Secretary

The meeting was called to order at 7:45 pm by President Jim Marsh. In attendance were Jim and Bev Marsh, Joe and Marion Wavra, Les and Martha White, Don and Linda Tune, Wade Roberts, Paul Steed, and Terry Lucas.

Secretary's report was approved as read. There was no Treasurer's report because the books are out for auditing.

The program at the next general meeting will be videos of the Pancake Breakfast and other MAFCA Events.

The May General Meeting program will be a shoe box swap meet.

Paul and Joe reviewed upcoming events and mall shows. There was discussion on the results of the Pancake Breakfast and how to improve it for next year.

The board discussed purchasing it's own button machine (due to the expense of having buttons made) and pancake droppers (to speed up and make uniform pancakes cooking). It was decided to advertise our needs in the Distributor to see if any members may have these items to sell or donate. If there is no response from the membership then new equipment will be purchased. Increasing costs associated with the Pancake Breakfast were discussed.

## BOARD MEETING (CONTINUED)

Don reported that the April technical seminar will be on transmission assembly and will be held at the Ferazzi's home. It was discussed that a \$25 ad be purchased to advertise our club in the National Meet Program. It was motioned by Martha, seconded by Joe and passed by majority. The next Board Meeting will be held at the Wavra's home on April 19th.

The meeting was adjourned at 10:45 pm.

Respectfully Submitted



## ONE FOR THE ROAD

By Paul Steed  
co-Activities Chairman

By the time you read this our trip to Laughlin, Nevada will be over. I hope you were able to attend.

The Annual Air, Auto Show and Open House at the Marine Corps Helicopter Station in Tustin is on April 1st.

The White Water Fishing Trip leaves the Mall of Orange on April 8th at 8am. You don't need to bring a pole or equipment as they are furnished. Bar-B-Que's are available for usage so all you need to bring are some condiments and your "A" or modern iron, (Note: \$2.00 fishing charge and \$2.56 lb. for fish caught).

April 22nd, take your choice, Classic Car Racing at Carlsbad raceway or Kite Flying. We will meet for both tours at Coco's off of El Toro Road and 405 at 7am for breakfast, departure time is 8am SHARP. Kite or Racing you choose.

April 29th, World's Greatest Working Truck Show at Anaheim Stadium.

May 6th is So. Cal Regional Fun Day. Remember we are hosting the event this year.

May 18, 19, 20th is a tour to Santa Barbara for a

## ONE FOR THE ROAD (CONTINUED)

relaxing weekend, antiquing, walks on the beach, side trips to Solvang, or just sitting on the beach. We will be staying at Motel 6 by the beach.

See you on the road!



## PANCAKE BREAKFAST REVIEW

By Paul Steed and Terry Lucas  
Activities and Secretary

Pancakes, coffee and a record number of Model A Ford enthusiasts, and their cars were in attendance for our Breakfast and Raffle. The parking lot was filled to near capacity in spite of the fact that it rained Saturday night and early Sunday morning. Set up help was on sight before I, Paul, arrived at 6am, we were set up and production begun and underway in short time. The Breakfast went along smoothly. We did have a time keeping up with the coffee. Since the weather was brisk the coffee went as fast as Jerry McKinney could get the water hot enough.

After we had served breakfast Terry Lucas awarded trophies to the winners.

The Board of Directors would like to thank the members who helped to make this year's event a tremendous success. Several members donated prizes for the raffle which was outstanding. Many more gave



**PANCAKE BREAKFAST (CONTINUED)**

generously of their time, shopping, setting-up, registering, cooking and cleaning. Without members such as these our event would not be as successful as it is.

To qualify some of the results a record number breakfasts were served. 137 Model A's were on display. Eleven chapters toured to our breakfast.

The guest breakdown by Chapter is as follows:

Chapter	1990 A's	1989 A's
Orange County	38	28
Whittier	11	12
Pomona Valley	10	11
San Fernando Valley	10	3
Santa Anita	7	0
Diamond Tread	3	11
Palomar	3	0
Angel City	3	1
San Diego	1	5
Harbor MARC	4	0
Unregistered	37	21

The following Model A's were awarded People's Choice Awards:

**Open Car Award**  
'30 Roadster owned by Bill Mason from Capistrano A's.

**Closed Car Award**  
'31 Fordor Sedan owned by Bud Kiser from Orange County.

**Commercial Award**  
'29 Roadster Pickup owned by Keith Brush from Orange County.

Votes were cast by everyone in attendance and Terry Lucas MC'ed the Raffle. We had quite a few prizes awarded, which took about an hour. When the Raffle was over it was like someone had said "Gentlemen Start Your Engines", the parking lot was soon emptied and the clean up had already begun.

Thanks again to everyone that donated there time, blood, sweat, parts, ect. Which made our club's yearly event so much fun for so many Model "A" enthusiasts.

Again Thanks.

**BOARD MEETING MAP**



**PANCAKE BREAKFAST 1990**



Photos By Glenn Johnson, Don Tune and Les White





# PANCAKE BREAKFAST 1990





**APRIL**

**CALENDAR  
APRIL 1990**

1st SUNDAY - Annual Air, Auto, Show and Open House at Marine Corps Helicopter Station in Tustin. 6:30 am - 4:30pm. For more info call Linda Tane (714) 832-8239.

8th SUNDAY - White Water Fishing Tour, near Palm Springs. Fishing, Picnic, and BBQ. Departs Mall of Orange 8:00a.m. SHARP.

22nd SUNDAY - Kite Flying, departs Coco's Restaurant in El Toro 8:00a.m. SHARP. Meet there at 7:00a.m. for breakfast with the Carlsbad Raceway Tour. Don't forget your kite!

22nd SUNDAY - Carlsbad Raceway, antique drags. Departs Coco's Restaurant in El Toro 8:00am SHARP. Meet there at 7:00 am for breakfast with the Kite Flying Tour.

29th SUNDAY - Fabulous Fords Forever, in Buena Park, at Knott's Berry Farm.

28th SATURDAY - Seal Beach Main Street Car Show. Trophies for preregistered cars only, \$12 fee. Registration deadline April 21. For more info contact: Bob French (213) 869-3269. P.O. Box 622, Downey, CA 90241.

29th SUNDAY - World's Greatest Working Truck Show. Anaheim Stadium 11 a.m. - 2 p.m. Charity.

**NATIONAL EVENTS**

8th SUNDAY - Toledo Ohio, Western Lake Erie Region 17th Annual Swap Meet at Lucas County Recreation Center. For info: Dave Kevorkian 5460 Cresthaven, Toledo, OH 43614 (419) 867-1195.

22nd SUNDAY - Swap Meet at Mission College hosted by the Santa Clara Valley Chapter, MAFCA. Info: Dennis Rinaldi, 4848 Pepperwood Way, San Jose, CA 95124 (408) 266-6783.

26-29th THURSDAY-SUNDAY - 18th Annual Pate Swap Meet sponsored by the Pate Swap Meet Association. Largest Swap Meet west of the Mississippi. For info: Pate Swap Meet, 7751 Oak Vista, Houston, TX 77087 (713) 649-0922.

28th SATURDAY - MAFCA Board of Directors Meeting, Fort Worth, Texas.

	SUNDAY	MONDAY	TUESDAY	WEDNESDAY	THURSDAY	FRIDAY	SATURDAY
	1 Air, Auto Show	2	3	4	5	6	7
	8 White Water Fishing Tour	9	10 First Day Passover	11	12 General Meeting 7:30pm	13 Seminar Ferazzi's 7:30pm	14
	15 Palm Sunday	16	17	18	19 Board Meeting Wavra's 7:30pm	20 Good Friday	21
	22 Easter	23	24	25	26	27	28
	22 Kite Flying Tour	23	24	25	26	27	28
	29 World's Greatest Truck Show Fabulous Fords	30					

**May**

6th SUNDAY - So. Calif. Regional Fun Day at Leg Lake. We bring the Goodie Bags, so don't forget to help us round up the needed items.

18, 19, 20th - FRIDAY, SATURDAY, SUNDAY - Santa Barbara Tour. Contact: Bev Marsh or June Riha.

19th SATURDAY - Ultimate Car Show at Los Alamitos Race Course. For more information call: Bob French, (213) 429-7720. For registration form send SASE to Bob French, Car Show Coordinator, Box 622, Downey, CA 90241.

**NATIONAL**

25, 26, 27, 28th FRIDAY-SATURDAY- SUNDAY- MONDAY - Northern California Regional Group 28th Annual Roundup. For more info call: Bob Carpenter (916) 443-7901 work / (916) 456-9047 Home.

**JUNE**

10th SUNDAY - Escondido - 6th Annual Deer Park Concours d' Elegance.

15, 16, 17th - FRIDAY, SATURDAY, SUNDAY - Buena Park Mall Show. (Thirty Cars are Needed). Call Joe Wavra (714) 549-2881.

**NATIONAL**

3rd SUNDAY - Hangtown A's Annual Old Car Swap Meet. Eldorado County Fair grounds, Placerville, 6am-1pm \$5 per space. More info call: Dave Fagan (916) 677-3979.

10-12th SUNDAY-TUESDAY - 27th Texas Model A Ford Tour. Inn of the Hills River Resort, Kerrville, Texas (512) 895-5000. Blue ribbon judging, road rally, era fashion judging, car games, fun for all ages. More info later.

10th SUNDAY - 3rd Annual Model A Ford Day sponsored by the "Rock Ford A's" and Midway Village. Loads of events. For info: David Clerk, 8307 Mark Drive, Roscoe, IL 61073 (815) 389-4316.

**SEPTEMBER**

23rd SUNDAY - Paradise Valley Swap Meet 6am-3pm space \$5 at Riverside City College, Riverside (back parking lot) Info: Bob (714) 778-5789 or Pat (714) 885-4455.

**TECHNICAL SEMINAR MAP**





## ORANGE COUNTY CLASSIFIED ADS

The advertisements placed in this Publication are for the information and convenience of our membership. The Orange County Model A Ford Club of America takes no responsibility for the quality of the goods and services offered herein.

### WILL TRADE:

GOOD 12 VOLT OVERDRIVE SOLENOID FOR GOOD 6 VOLT SOLENOID.

CALL: DON TUNE  
(714) 832-8239

### WANTED:

GOOD EXHAUST AND INTAKE MANIFOLDS, MATCHED.

CALL: LES OR MARTHA WHITE  
(714) 870-6417

### WANTED:

UNRESTORED '30-'31 STEERING COLUMN ASSEMBLY.

CALL: DON TUNE  
(714) 832-8239

### WANTED:

INDOOR STORAGE WANTED FOR MODEL "A" BUS.

CALL: PIET DWINGER  
(714) 633-1921

### WANTED:

BADGE MAKER FOR 2 1/4" TO 3 1/2" BUTTONS.

CALL: BEV MARSH  
(714) 531-7237 OR  
PAUL STEED (714) 998-0394

### WANTED:

2 PANCAKE DROPPERS FOR MAKING UNIFORM PANCAKES.

CALL: BEV MARSH  
(714) 531-7237 OR  
PAUL STEED (714) 998-0394

### WANTED:

USED FIBERGLASS RIGHT REAR FENDER (to be narrowed for my Huckster).

CALL: CHARLES WARNER  
(714) 633-6165

### WANTED:

IF ANYONE HAS AN ATTORNEY SIZED TOP LOADING BRIEFCASE THAT THEY WANT TO GET RID OF THE CLUB COULD USE ONE.

CALL: WADE ROBERTS  
(714) 676-6467

### WANTED:

"MODEL A MISERIES AND CURES", BY, MARY MOLINE - PUBLISHED BY, RUMBLESEAT PRESS.

CALL: LEO RIVARD  
(714) 534-1536

### FOR SALE:

1930 "A" COUPE, PINTO 2300 ENGINE, SYNCRO 3 SPEED TRANS, HYP BRAKES, 16" WHEELS, AIR CONDITIONING, RUMBLESEAT, INCLUDES MODEL "A" ENGINE AND "A" TRANS, \$8500.

CALL: JOE WAVRA  
(714) 549-2881

### FOR SALE:

'29 FORDOR BRIGGS COMPLETE CAR, \$2500 FOR DETAILS,  
CALL: KYLE UNDERWOOD  
(714) 871-4690

## VINTAGE PARTS

11318 BEACH BLVD., STANTON, CA 90680  
(714) 894-5464

1909 TO 1959  
CARS AND TRUCKS  
F-100's TO 1966

HOURS:  
Mon.-Fri. 9 - 5  
Sat. 9 - 4

### FOR SALE:

4 - 19" "A" RIMS \$25. EACH  
CALL: WADE ROBERTS  
(714) 675-5457

### FOR SALE:

72 MBZ 250C - 86,000 MI.  
TOBACCO OVER CHAMPAGNE,  
EXCELLENT COND. \$7995.  
CALL: MYKE WINGETT  
(714) 542-3089 AFTER 6 P.M.

### FOR SALE:

1 LINE BORE & 10 CAPS FOR  
MODEL A ENGINE. \$150 VALUE,  
FROM C&W INSERTED ENGINES  
OF SANTEE, CA. MAKE OFFER.  
CALL: RON SMITH  
(213) 425-5231

### VACATION RENTAL:

BIG BEAR LAKE, CABIN 3 BDR,  
SLEEPS 6. SPECIAL RATES FOR  
CLUB MEMBERS.  
CALL: MYKE WINGETT  
(714) 542-3089 AFTER 6 P.M.

## Attic Delights

QUALITY VINTAGE CLOTHING  
HATS, JEWELRY  
COSTUMES & ACCESSORIES  
144 N. GLASSELL  
ORANGE, CA 92666  
TUES. - SAT. 11-5

JUDY & LISA TACKETT 639-8351



# TOM'S

IN  ORANGE  
- 22 - YEARS

RADIATOR & AIR CONDITIONING  
528 W. Chapman (at Batavia)  
Orange, CA 92668

"TOM" 532-6771 "RANDY"



# A Lines

LE "ECHO  
DE PARIS



5466  
BRISAC



5477  
EMBR. 1528



5490  
JENNY BILLIQUE



5459  
BARIL ET JAUGEON  
EMBR. 1350



**M**  
GARMENTS  
THE PERFECT UNDERWEAR FOR CHILDREN

—the choice of  
careful Mothers

THERE'S comfort and style for the youngsters... value and economy for you... in Minneapolis "M" Garments. Fabrics of fine quality, workmanship of unusual excellence, correct sizes, fit that neither washes out nor wears out.

Every Underwear Need for Infants and Children—from birth to sixteen—is included in Minneapolis "M" Garments:—

Infants' Shirts, Bands, Party Waists, Children's Union Suits, Waist Union Suits, Vests, Bloomers and Combinations.

in all desired fabrics—and at prices that will surprise you at the values offered!

The Minneapolis Sleeper offers safe, comfortable night dressing of children. Offered in pure white, all cotton and in the famous "M" Bi-Knit fabric combining soft cotton inside and part wool outside for warmth.

Millions of mothers know the Minneapolis "M" trademark as the safe guide in buying children's underwear and sleeping garments. Look for it at your Dry Goods store.

Minneapolis Knitting Works

Minneapolis, Minn.  
The "M" Bi-Knit Shirt protects baby's health.



6281 6390 6289



6166 6177 6190 6165

No. 5166. Very simple lines are made smart by a button-trimmed side closing, and a belt that passes under the flap of a pocket. Size 12 requires  $2\frac{3}{4}$  yards of 36-inch material or 2 yards of 54-inch material.

No. 5477. Pleats trim the front of a school frock cut on practical lines with raglan sleeves. Size 6,  $1\frac{3}{4}$  yards 40-inch; collar,  $\frac{1}{4}$  yard 40-inch. A smart decoration would be Embroidery No. 1528 in appliqué.

No. 5490. Paris makes flaring funners and a bertha collar as attractive for little girls as for grown-up fashions. Size 2 requires  $1\frac{1}{2}$  yards of 36-inch or 40-inch material; ribbon tie requires  $\frac{1}{8}$  yard of  $1\frac{1}{2}$ -inch.

No. 5459. One sided effects are emphasized in a frock which has bows and plaits on one side and pocket on the other. Size 10,  $2\frac{1}{4}$  yards 40-inch. Buttonhole-stitch motifs on pocket. Embroidery No. 1350, would add color.



5390



5384



5389

No. 5390. A frock which makes decorative use of contrasting fabrics has a short skirt plaited all round. Size 8, waist,  $\frac{1}{8}$  yard 32-inch; contrasting,  $1\frac{3}{8}$  yards 32-inch or  $1\frac{1}{8}$  yards 40-inch.

No. 5384. Three frills form the skirt of a short sleeved party frock, and another frill trims the round neckline. Size 4 requires  $3\frac{1}{8}$  yards 32-inch material or  $2\frac{3}{8}$  yards 40-inch; plaiting,  $\frac{5}{8}$  yard  $1\frac{1}{2}$  inch.

No. 5389. A circular skirt, and a deep collar that knots in front are new style details of a short sleeved frock. Size 8 requires  $2\frac{3}{8}$  yards of 36-inch material or  $2\frac{1}{8}$  yards of 40-inch.

Patterns may be bought from all McCall dealers, or by mail, postage prepaid, from The McCall Co., 236 West 37th St., New York City, at prices listed on page 121.





# 16TH NATIONAL CONVENTION — 1990 MODEL A FORD CLUB OF AMERICA

HOSTED BY THE QUEEN MARY CHAPTER  
TOWN & COUNTRY HOTEL, SAN DIEGO, CALIFORNIA

**JULY 8 - 14, 1990**

## CONVENTION REGISTRATION FORM — SECTION I

PLEASE TYPE OR PRINT AND COMPLETE ALL SECTIONS OF THIS FORM

NAME: \_\_\_\_\_ SPOUSE: \_\_\_\_\_ PHONE: ( ) \_\_\_\_\_

ADDRESS: \_\_\_\_\_ CHAPTER: \_\_\_\_\_

CITY: \_\_\_\_\_ STATE: \_\_\_\_\_ ZIP: \_\_\_\_\_ COUNTRY: \_\_\_\_\_

**ATTENDING CHILDREN'S NAMES AND AGES** NAME \_\_\_\_\_ AGE \_\_\_\_\_

NAME \_\_\_\_\_ AGE \_\_\_\_\_ NAME \_\_\_\_\_ AGE \_\_\_\_\_

THE MODEL A FORD CLUB OF AMERICA NATIONAL MEET IS OPEN TO ALL MODEL A FORD ENTHUSIASTS, HOWEVER MAFCA MEMBERSHIP IS REQUIRED. NON-MEMBERS CAN PAY THE ANNUAL DUES OF \$20.00 WITH REGISTRATION. (OUTSIDE U.S.A. MEMBERSHIPS ARE \$24.00 or \$36.00 FOR 1ST CLASS.)

## MODEL A REGISTRATION

VEHICLE #1: \_\_\_\_\_ VEHICLE #2: \_\_\_\_\_  
YEAR \_\_\_\_\_ BODY STYLE \_\_\_\_\_ YEAR \_\_\_\_\_ BODY STYLE \_\_\_\_\_

### CHECK APPROPRIATE BOX

- I INTEND TO ENTER 500 POINT MODEL A JUDGING.  
VEHICLE 1  BLUE RIBBON  MODIFIED CLASS  ORIGINAL CLASS  TOURING CLASS  
VEHICLE 2  BLUE RIBBON  MODIFIED CLASS  ORIGINAL CLASS  TOURING CLASS
- I INTEND TO ENTER PRELIMINARY (RED RIBBON) JUDGING ONLY.
- PLEASE SEND \_\_\_\_\_ FORMS TO REGISTER FOR MAFCA YOUTH DRIVING CONTEST.
- I WILL BE AVAILABLE TO ASSIST IN CAR JUDGING IF REQUESTED.  
(JUDGING FORM WILL BE FORWARDED UPON REGISTRATION.)
- I WILL ENTER HUBLEY DERBY.  PLEASE SEND \_\_\_\_\_ FORMS TO REGISTER FOR HUBLEY DERBY.
- I INTEND TO ENTER THE FASHION JUDGING.  ORIGINAL  REPRODUCTION
- I WILL BE AVAILABLE FOR FASHION JUDGING IF REQUESTED.  
(THE ERA FASHION JUDGE WILL SEND YOU FORMS UPON RECEIPT OF REGISTRATION.)
- PLEASE SEND \_\_\_\_\_ FORMS FOR MR/MISS TEEN MODEL A'ER.
- I NEED INFORMATION ON CAMPING AND RV FACILITIES NEAR CONVENTION SITE.  NEED DAY USE RV PARKING.  
(NOTE: NO OVERNIGHT CAMPING IN RV'S AT HOTEL. DAY USE ONLY.)
- I REQUIRE SPECIAL DIET AT BANQUETS.
- PLEASE SEND FORMS TO ORDER SOUVENIRS: T-SHIRTS, HATS, CUPS, PINS, ETC.

### HOTEL REGISTRATION AUTHORIZATION WILL BE SENT TO YOU WITH YOUR CONVENTION CONFIRMATION

MAKE ALL CHECKS PAYABLE TO: **QUEEN MARY CHAPTER — 1990 MAFCA CONVENTION**

SEND TO: MARTHA TROUSIL  
8535 LUBEC STREET  
DOWNEY, CA 90240

I HEREBY RELEASE THE MAFCA AND QUEEN MARY CHAPTER AND ALL PARTICIPATING CHAPTERS FROM ANY AND ALL LIABILITIES. SUBMITTAL OF THIS REGISTRATION FORM SIGNED OR UNSIGNED CONSTITUTES ACCEPTANCE OF THIS RELEASE.

SIGNATURE \_\_\_\_\_ DATE \_\_\_\_\_ AMOUNT ENCLOSED \_\_\_\_\_



## CONVENTION REGISTRATION FORM — SECTION II

	FEE/EACH	QUANTITY	TOTAL
Registration fee (per family) .....	\$45.00	_____	\$ _____
Additional Model A .....	\$10.00	_____	\$ _____
Late registration (after May 15, 1990) .....	\$60.00	_____	\$ _____
MAFCA dues for non-members .....	\$20.00	_____	\$ _____
MAFCA dues outside U.S.A. for non-members .....	\$24.00	_____	\$ _____
MAFCA dues outside U.S.A. for non-members with 1st class mailing .....	\$36.00	_____	\$ _____

**SUNDAY** (July 8)       WELCOME ABOARD PARTY (under 18 free)      8:00 pm-10:30 pm      \$ 2.00      \_\_\_\_\_      \$ \_\_\_\_\_

**MONDAY** (July 9)       GET ACQUAINTED BREAKFAST      7:00 am- 9:00 am      \$11.50      \_\_\_\_\_      \$ \_\_\_\_\_  
 Tour to: TIJUANA (transportation fee only)      8:00 am- 5:00 pm      \$12.00      \_\_\_\_\_      \$ \_\_\_\_\_

	Fee/Ea.	Qty.		Fee/Ea.	Qty.	Total
<input type="checkbox"/> A. Rear End Overhaul	\$2.00	_____	<input type="checkbox"/> E. Engine Rebuilding	\$2.00	_____	A & E
<input type="checkbox"/> B. Era Jewelry (9 am-11 am)	\$2.00	_____	<input type="checkbox"/> F. Authentic Fashions	\$2.00	_____	B & F
<input type="checkbox"/> C. License Plate Restoration	\$2.00	_____	<input type="checkbox"/> G. Brakes	\$2.00	_____	C & G
<input type="checkbox"/> D. Station Wagons	\$2.00	_____	<input type="checkbox"/> H. National Car Judging	\$2.00	_____	D & H
<input type="checkbox"/> Youth Driving Event .....			1:00 pm- 3:00 pm	n/c	_____	
<input type="checkbox"/> Mr/Miss Teen Model A'er .....			3:30 pm- 5:00 pm	n/c	_____	
<input type="checkbox"/> COUNTRY WESTERN DINNER PARTY .....			7:00 pm-11:00 pm	\$20.00	_____	\$ _____

**TUESDAY** (July 10)  
 SEMINARS 8:30 am-11:00 am      SEMINARS 1:00 pm-3:00 pm

	Fee/Ea.	Qty.		Fee/Ea.	Qty.	Total
<input type="checkbox"/> J. Upholstery	\$2.00	_____	<input type="checkbox"/> N. Reproduction Fashions	\$2.00	_____	J & N
<input type="checkbox"/> K. Keys & Locks	\$2.00	_____	<input type="checkbox"/> O. Transmission/Flywheel & Clutch Assembly	\$2.00	_____	K & O
<input type="checkbox"/> L. News Letters/Club Publications	\$2.00	_____	<input type="checkbox"/> P. Distributors	\$2.00	_____	L
<input type="checkbox"/> M. Paint/Stripe	\$2.00	_____	<input type="checkbox"/> Q. Model A Advertising	\$2.00	_____	M & P
<input type="checkbox"/> Fashion Judging (by appointment) .....			9:00 am-12:00 pm	n/c	_____	Q
<input type="checkbox"/> Ladies Driving Events .....			1:00 pm- 5:00 pm	n/c	_____	
<input type="checkbox"/> Hubley Derby .....			1:00 pm- 5:00 pm	n/c	_____	
<input type="checkbox"/> Judged Mini Model A's .....			1:00 pm- 5:00 pm	n/c	_____	
<input type="checkbox"/> Tour: HARBOR CRUISE — Bus/Dinner (limited attendance) .....			6:00 pm-10:00 pm	\$45.00	_____	\$ _____

**WEDNESDAY** (July 11)      **QUANTITY**

<input type="checkbox"/> R. Model A Ford Foundation Seminar .....	1:00 pm- 2:00 pm	n/c	_____
<input type="checkbox"/> SLIDE SHOW: 1982 MODEL A AROUND THE WORLD TOUR (Bob & Dottie Meyer) Donation to the Model A Ford Foundation .....	8:30 pm-10:00 pm	\$ 1.00	\$ _____
<input type="checkbox"/> Fashion Judging (by appointment ONLY) .....	8:00 am- 5:00 pm	n/c	_____
<input type="checkbox"/> Car Judging .....	6:30 am- 5:00 pm	n/c	_____

**THURSDAY** (July 12)

<input type="checkbox"/> Tour to: WILD ANIMAL PARK (mandatory for judged cars) .....	7:00 am- 4:00 pm				
	<b>Qty.</b>	<b>Total</b>		<b>Qty.</b>	<b>Total</b>
<input type="checkbox"/> Admission (optional): Child (3-15 yrs.) \$ 5.00 .....	_____	\$ _____	Adult \$10.50	_____	\$ _____
<input type="checkbox"/> Admission with box lunch: Child (3-15 yrs.) \$13.75 .....	_____	\$ _____	Adult \$19.25	_____	\$ _____
<input type="checkbox"/> FASHION AWARDS BANQUET .....			7:00 pm-11:00 pm	\$21.00	\$ _____

**FRIDAY** (July 13)

<input type="checkbox"/> Antique Mall Tour (bus transportation only) .....	8:30 am-12:30 pm	\$ 5.00	_____	\$ _____
<input type="checkbox"/> S. MAFCA National Fashion Judging Seminar .....	9:00 am-11:00 am	\$ 2.00	_____	\$ _____
Body Style Meetings .....	8:30 am-11:00 am			
	<b>Qty.</b>		<b>Qty.</b>	
<input type="checkbox"/> 1. AA (10:30 am)	_____	<input type="checkbox"/> 5. Postal Trucks	_____	n/c
<input type="checkbox"/> 2. A 400	_____	<input type="checkbox"/> 6. Station Wagons	_____	n/c
<input type="checkbox"/> 3. Cabriolet	_____	<input type="checkbox"/> 7. 29 Town Sedans	_____	n/c
<input type="checkbox"/> 4. Deluxe Roadsters & Phaetons	_____	<input type="checkbox"/> 8. Victorias	_____	n/c
<input type="checkbox"/> AWARDS BANQUET .....		7:00 pm-11:00 pm	\$25.00	\$ _____
<input type="checkbox"/> YOUTH BON VOYAGE PARTY .....		7:00 pm-11:00 pm	\$ 6.00	\$ _____

**SATURDAY** (July 14)       FAREWELL CONTINENTAL BREAKFAST      8:00 am-10:00 am      \$ 3.00      \_\_\_\_\_      \$ \_\_\_\_\_

CANCELLATIONS AFTER JUNE 11, 1990 ARE SUBJECT TO A CANCELLATION FEE.      TIME & SCHEDULE SUBJECT TO CHANGE.      PLEASE COMPLETE BOTH SECTIONS.

TOTAL: \$ \_\_\_\_\_



# The 30 minute STANCHION project



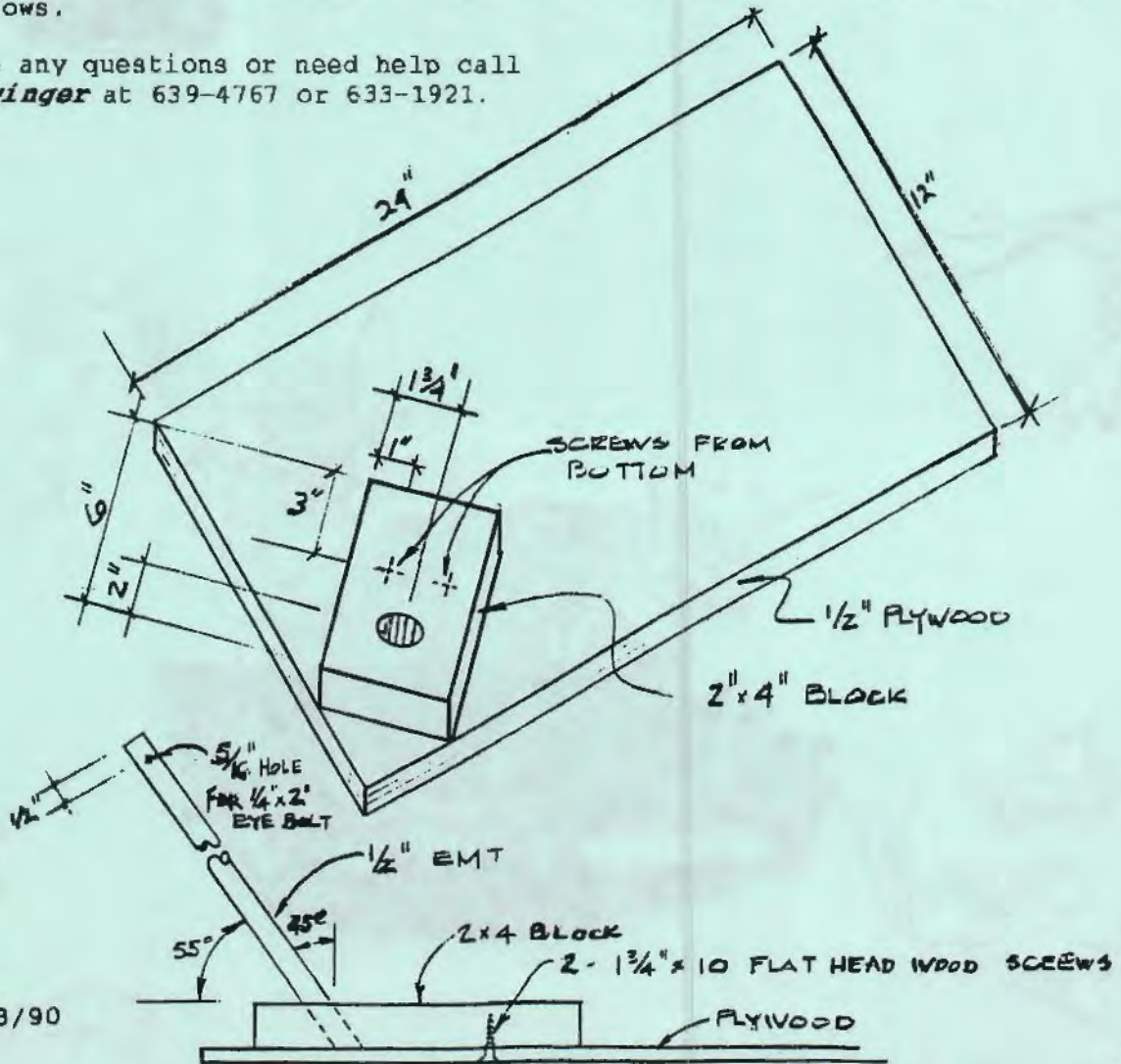
## Material list:

1. (1) piece of 1/2 inch plywood 12 inch x 24 inch
  2. (4) pieces of 2 x 4 (6) inches long each
  3. (8) 1 3/4 inch #10 flat head (phillips) wood screws
  4. (4) pieces of \*\*1/2 inch EMT (aluminum) electrical conduit
  5. (4) 1/4 x 2 inch eye bolts with nuts
  6. 50 feet of nylon rope either 3/16 or 1/4 inch
  7. Paint (any color) how about your own car color ?
- \*\* (Adjust parts & assembly list if you want to use 3/4 inch EMT.)

## Assembly instructions: (see isometric drawing below)

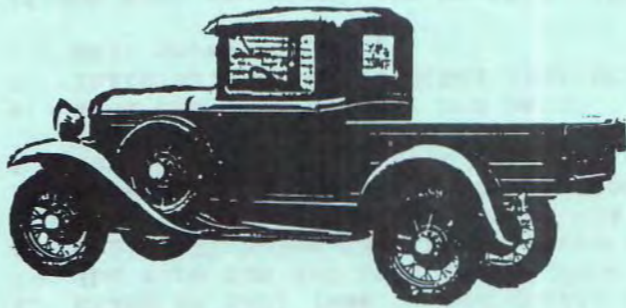
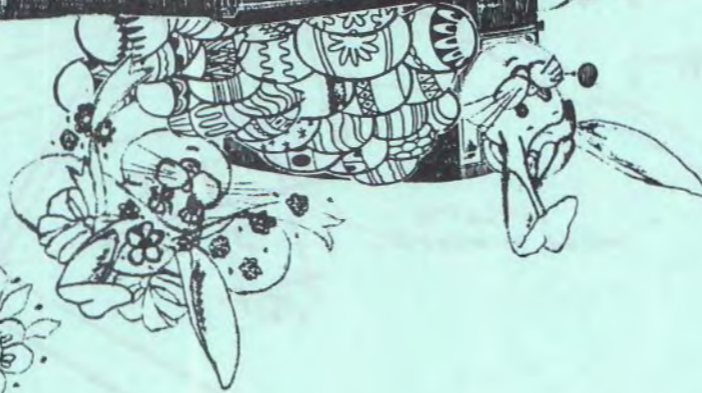
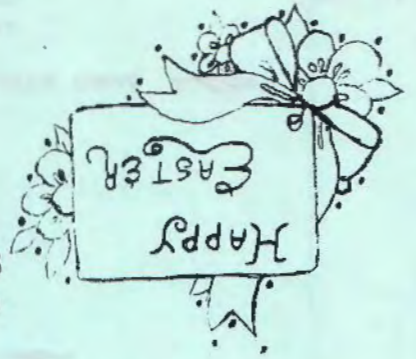
1. Cut the plywood and 2 x 4 blocks
2. Drill one 3/4 inch hole, all the way thru the block of wood, at a 35 angle (use template below) in each of the (4) 2x4 blocks
3. Clamp or nail (use 1 inch nails) one block to each piece of plywood, set at 45° (be sure the 3/4 inch angled hole is slanting towards the corner)
4. Drill (2) holes thru the plywood and into the 2 x 4s about 1 1/2 inch. You don't need to drill thru the top of the 2x4, since the screws will be inserted thru the plywood into the 2 x 4 blocks, use a 5/32 inch drill bit
5. Cut the EMT to (4) foot lengths, sand the ends. Then drill a 5/16 inch hole 1/2 inch from one end, and install one eye bolt into each pole.
6. Sand the wood lightly and paint
7. Thats all folks.....other than bringing your master pieces (and Model 'A') to the mall shows.

If you have any questions or need help call  
**Pieter Dwinger** at 639-4767 or 633-1921.



revised 3/90





MAFCA  
 ORANGE COUNTY CHAPTER  
 POST OFFICE BOX 10595  
 SANTA ANA, CA 92711

**First Class Mail**



MAFCA